



COSMOLEDO
ALPHONSE FISHING CO.
SEYCHELLES



Cosmoledo Atoll

ECO CAMP

FACT SHEET

THE ULTIMATE FISHING EXPERIENCE...

www.alphonsefishingco.com

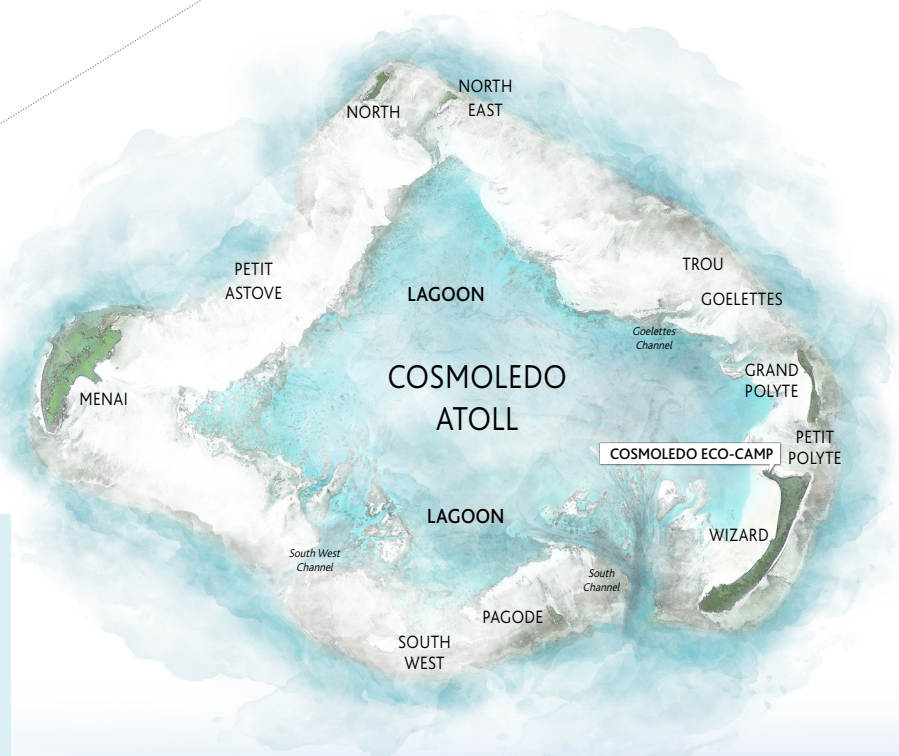
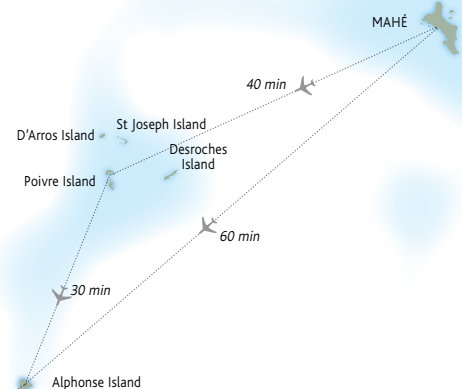
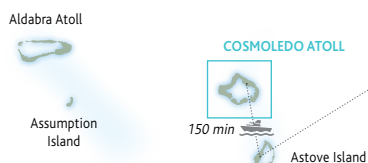
RDV JUNE23



INTERNATIONAL FLIGHTS
DIRECT FLIGHTS TO/FROM SEYCHELLES

Cosmoledo Atoll

Located 1 030 km southwest of Mahé, Cosmoledo Atoll is situated a stone's throw away from the world heritage site of Aldabra, which is often referred to as the Galapagos of the Indian Ocean. Menai and Wizard Islands occupy the eastern and western points of the atoll and were named after the two ships that explored the atoll on the Moresby Expedition in 1822. South Island stands near the main entrance to the inner lagoon, while the second, smaller entrance is just south of Menai. It's a huge atoll measuring 17 km from north to south. The perimeter of the atoll is covered with vast, wadeable sand flats dotted with islands of various shapes and sizes, all of which is the perfect habitat for its fish population.



AT A GLANCE

- Located 560 nautical miles southwest of Mahé in the Seychelles, and 18 nautical miles away from Astove Atoll.
- Situated only 9° south of the equator.
- Cosmoledo comprises of a larger white sand lagoon surrounded by 18 islands, numerous flats and two main channels.
- One of the most remote inhabited islands in the Seychelles.
- Accommodate up to 12 fly fishermen per trip.
- Similar time zone to Europe, African and Middle East.







COSMOLEDO ATOLL

Remote, Pristine & Untouched...

Cosmoledo Atoll is truly a diverse nature lover's paradise of incomprehensible proportions. The ecosystem is pristine and untouched, with humans having had very little impact on its environment over the years. The encounters you will see on a daily basis are proof of how remote and preserved this magnificent atoll is.

Cosmoledo is an important bird area and holds Seychelles' largest colonies of all three species of booby that breed in Seychelles. The atoll holds the last viable population of brown booby, breeding mainly on South West Island, with a few on the west of North Island. It also has the Indian Ocean's largest population of red-footed booby censused by the Island Conservation Society as about 15 000 pairs. Hundreds of non-breeding frigatebirds of both species are to be seen, these being probably from Aldabra. Cosmoledo also has Seychelles' largest colony of sooty tern breeding on the northern end of Wizard Island. Second only to Aldabra are the numbers of breeding red-tailed tropicbird, black-naped tern and crested tern.

The lagoon is an important feeding ground for migratory waders, with crab plover and ruddy turnstone most common. There are three endemic races of land bird: the Madagascar white-eye (race menaiensis), the souimanga sunbird (race buchenorum) and a particular form of Madagascar turtle dove. The Madagascar cisticola is also common and there are a few pied crow present.



There are areas of tall mangrove, especially on the lagoon side of Menai Island. Coconuts are common only on Menai, where many were planted.

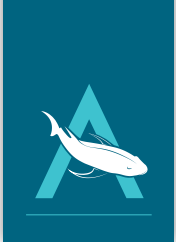
Lizards include Bouton's snake-eyed skink and Madagascar banded lizard, the latter found nowhere else in Seychelles. The sand-filled shores are also a breeding ground for the green and hawksbill turtle, and it is not uncommon to see the turtle hatchlings digging their way free from their sandy nests and heading for the sea. The reefs are spectacular and offer some of the best diving in Seychelles.

The Island Conservation Society has carried out conservation and rehabilitation work on the atoll, including the eradication of introduced rats and cats on several islands.



GETTING THERE

- The Seychelles is a four and a half hour flight from Dubai, Abu Dhabi, and Doha which all serve as a connecting hub for regular international flights from Europe, the United States, Africa and Asia.
- There are direct flights to the Seychelles from Paris, Bombay, Nairobi, Mauritius, Antananarivo, Johannesburg, Addis Ababa, Reunion, Colombo, Dar-Es-Salaam, Frankfurt and London.
- Cosmoledo Atoll is a one-hour boat transfer (18 nautical miles) from Astove Atoll; which is a three-hour flight from Mahé (the main island of the Seychelles).
- The group meets an hour before the scheduled departure time at the IDC hangar terminal. After the three-hour flight to Astove Atoll, guests will be met by the Alphonse Fishing Co. crew and transferred to the transfer vessel. The yacht will then depart on the three-hour sail to Cosmoledo Atoll, situated 18 nautical miles away. The group will spend the days fishing and exploring the islands, flats and channels of Cosmoledo Atoll.
- On departure day the transfer vessel will sail back to Astove at dawn, where the IDC charter flight will collect the group for their three-hour flight back to Mahé.
- Scheduled flights depart and return to Mahé each Thursday.
- Scheduled Flights depart from the IDC Hangar, Pointe Larue, Mahé.
- Flight times are subject to change. Please make sure you confirm your correct flight times with our reservations team.
- Guests are expected to arrive in Mahé the day before their trip as any delay on the day of departure will certainly cause the trip to be missed. It's as important for return flights to be booked the next day after arriving back in Mahé as any delays may cause guests to miss their international flights.
- The Alphonse Island reservations team will assist with all return flight reservations between Mahé and Astove at the time of booking.



COSMOLEDO ATOLL

The GT Capital of the World

Cosmoledo has become known as one of the best giant trevally fisheries in the world and has become the benchmark for anglers searching for an outstanding saltwater flats fishing experience. The sheer numbers and variety of fish species has amazed the fly fishing world, with anglers from across the globe queuing up to sample this ultimate fishing playground. It is a rare opportunity and a privilege to gaze into a world, which has changed very little in the years that have passed.

It's an untouched ecosystem full of hungry, tackle-busting giant trevally. Cosmoledo's large white sand flats, lagoon edges and channels are, without question, ruled by the notorious giant trevally, so much so that it is often referred to as the GT capital of the world. These fish are, however, not the only species that can be found here in impressive numbers. Large bonefish, bluefin trevally, bohar snapper, barracuda, milkfish, the finicky Indo-Pacific permit and a host of triggerfish species all call Cosmoledo home.



TIDES

The water flow and tidal movement are considerable at Cosmoledo, and is particularly evident between islands, which channel the water flow. During low tide the flats are devoid of water, but once the tide starts pushing, fish move onto the flats from both the surrounding ocean and the lagoon.



A TYPICAL DAY

On a Fishing Expedition to Cosmoledo

DAY 1

Your charter flight departs Mahé from the IDC hangar, diverts to Alphonse Island and lands on Astove three hours later. The group is then transferred to the transfer vessel where orientation begins. The transfer vessel departs for Cosmoledo Atoll.

DAY 2-6

Breakfast at 07h00, teams to be ready to leave the camp at 08h00 for fishing. There is a choice between a packed lunch or lunch at the camp. At 17h00 your team will head back to the camp.

DAY 7

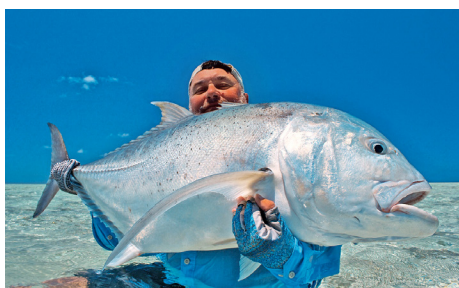
Breakfast at 07h00, teams to be ready to leave the camp at 08h00 for fishing. There is a choice between a packed lunch or lunch at the camp. 17h00, your team will head back to the camp. There will be time in the evening to de-tackle your gear with snack and cold refreshments so you are able to pack your rods, reels and fishing gear away in preparation for departure the following morning.

DAY 8

The departure time of the transfer vessel and the plan for your departure morning will be confirmed with you at dinner the evening before departure day. You will be transferred to Astove by the transfer vessel where you will meet the Astove team who will transfer you to the airport. The Charter flight will then depart, and possibly divert to Alphonse, landing at the IDC Hangar in Mahé three hours later.

THERE ARE MORE GT'S ON COSMOLEDO THAN ANY OTHER ATOLL IN THE INDIAN OCEAN

REGULAR CATCHES : bonefish | moustache triggerfish | milkfish | giant trevally | barracuda | bluefin trevally | permit | jobfish
bohar snapper | yellowlipped emperor | sailfish | yellowfin tuna | dogtooth tuna | wahoo | yellowmargin triggerfish





COSMOLEDO ATOLL

Equipped for the Ultimate Fishing Experiences



TACKLE & GEAR

The lodge will have a range of flylines, flies and various other items for sales should you run out. Any tackle that is needed can be pre-ordered and will be delivered to the lodge for your arrival.

FLEET & GUIDES

TENDER BOATS

Six purpose built Mini-Mahé skiffs are left on anchorage at Cosmoledo Atoll, making for a slicker experience. These skiffs will be skippered by our experienced, world class and professional Alphonse Fishing Co. Guides.

OUR GUIDES

- Are professional, passionate and extremely experienced with all facets of fly fishing in these remote saltwater destinations.
- Are fluent in English [some speak French and Creole].
- Carry waterproof VHF radios and are in constant communication with each other as well as the base on Cosmoledo.
- Are qualified skippers, with STCW qualifications and have impeccable boat handling skills.
- Have first aid experience.
- Have pioneered many of the techniques in catching the various species that call Seychelles home eg: milkfish & triggerfish.



ROD & REEL LOAN

Fly fishing outfits consisting of Thomas and Thomas fly rods and Shilton reels, loaded with 300 yards of Cortland braided backing can be loaned at no charge. Fly lines will need to be purchased from the shop and it is recommended that you pre-order a fly pack for your charter, which would include all the flies you would need for the various different species on offer. There is a full range of flies that are custom tied for Alphonse destinations on the right hooks and with the correct material. It's important that angler's pre book the rod hire as well as tackle to insure that we have sufficient stock. All tackle sales may be settled at the end of your trip upon check out at the lodge. All rod breakages are for your account and will be billed at US\$150 per rod.



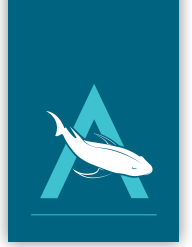
YETI

EST. 1969
THOMAS & THOMAS
THE ROD YOU WILL EVENTUALLY OWN

CORTLAND
LINE COMPANY | SINCE 1915

SHILTON
REELS

FLYZ INC.
Testing the Water through Innovation



COSMOLEDO

Eco Camp



Cosmoledo has a single Eco Camp situated on Wizard Island; where nature meets creative, eco-friendly hospitality. The Camp consists of eight double/twin en-suite Eco Pods with a central communal dining and entertainment area. The Eco Pods are made up of custom designed, upcycled shipping containers and the communal dining and entertainment area is a large tent with bare sand floors that are committed to the conservation, preservation and protection of the natural resources of Cosmoledo.

The dining and entertainment area are equipped with all the necessary features to make your stay one of comfort-in-style, including an exceptional dining area and a fully stocked bar. Nature enthusiasts, divers, anglers, single travellers and couples alike dine together for breakfast lunch and dinner. A full house buffet breakfast is served between 07h00 and 08h00, lunch between 12h00 and 13h00 and dinner will be served between 19h30 – 21h30. The chef prepares a mix of Creole and international dishes and incorporates fresh fish on a daily basis, with fruit and vegetables which are farmed in the Alphonse garden.

The Camp is fully equipped with snorkelling and dive gear as well as stand up paddle boards and kayaks that are available for all guests to use. Quiet picnics on secluded beaches, sunset cruises, mesmerising encounters with captivating marine life and experiencing the true essence of an untouched paradise, all in picture-perfect surroundings that will enhance every sensation.





ACCOMMODATION



Eco Pods

Cosmoledo has a single Eco Camp situated on Wizard Island where nature meets creative, eco-friendly hospitality. The Camp consists of eight double/twin en-suite Eco Pods with a central communal dining and entertainment area. The rooms are made up of custom designed Eco Pods and the communal dining and entertainment area is a large tent with bare sand floors that are committed to the conservation, preservation and protection of the natural resources of Cosmoledo.

Each Eco Pod can be catered for as a double or twin set up and has all the amenities and modern luxuries one can expect. From being en-suite to fully air-conditioned, each room boasts a front verandah with a seating area and a well appointed outdoor shower. The rooms are tailored in fresh neutral colours accentuating the island and her ocean, drawing in serenity, outdoor adventure and a sense of becoming-one with your surroundings.

AT A GLANCE

- Approx Size..... 38m²
- Occupancy 2 Adults
- Beds 1 King / Twin [on request]
- View..... Deck with Ocean Views

ROOM HIGHLIGHTS

- Easy beach access, with the ocean only meters away
- Cupboards
- Outdoor shower
- En-suite bathroom
- Private deck with sun loungers and relaxation area



ESSENTIALS & AMENITIES

Air-conditioned | Beach Towels | Outdoor Shower
Verandah Chairs | Sun Loungers





SEYCHELLES SPECIES

The Finest Saltwater Fly Fishing on the Planet

FLATS FLY FISHING



BONEFISH *Albula vulpes*

Cosmoledo has an extremely healthy population of bonefish that frequent the flats in the six to nine pounds range. On average the bonefish are much larger than other atolls in the Seychelles with fish of up to 12 lbs caught and regular sightings of fishing in the 8lbs to 10lbs range. Bonefish are constant on neap tides but much more difficult to find on spring tides due to the fluctuation of water.



YELLOWMARGIN TRIGGERFISH

Pseudobalistes flavimarginatus

Cosmoledo offers great opportunities when it comes to targeting yellowmargin triggerfish. These colourful characters, that grow in excess of 15 lbs, have extended anal and dorsal fins that work in conjunction with each other but in different directions, giving them incredible acceleration.



MOUSTACHE TRIGGERFISH *Balistoides viridescens*

colourful and energetic feeder that tails when feeding in the shallows, both up on the flats and on the reef edges. Known as a giant, titan or moustache triggerfish, it is the largest of the three species that can be caught at Cosmoledo. The Alphonse Guides were the first to develop the flies and techniques to deceive these fish, as well as to introduce triggerfish as a much sought-after trophy for flats fisherman.



MILKFISH *Chanos chanos*

A finicky algae feeder and a ferocious aerobic fighter reaching lengths in excess of 180 cm and weights over 50 lbs. The Alphonse Guides were the first to develop the flies and techniques to catch this sought-after trophy. The milkfish at Cosmoledo are somewhat smaller than that of Alphonse, but appear in larger numbers.



INDO-PACIFIC PERMIT *Trachinotus blochii*

Also known as pompano, it is a member of the Carangid family and a relative of the Atlantic permit. Cosmoledo has good populations of permit and tends to have these fish spread out over the entire fishery. The Alphonse guides have near-perfected the art of catching these fish, considered the "Holy Grail" of saltwater flyfishing!



GIANT TREVALLY *Caranx ignobilis*

Cosmoledo Atoll is without doubt the GT capital of the world, with more GT's frequenting this atoll than any other atoll in the Seychelles. Guests can expect good numbers of fish throughout the week with an average catch stat of approximately 60 – 90 fish per week for the group. This super predator has been caught at Cosmoledo in excess of 120 lbs.



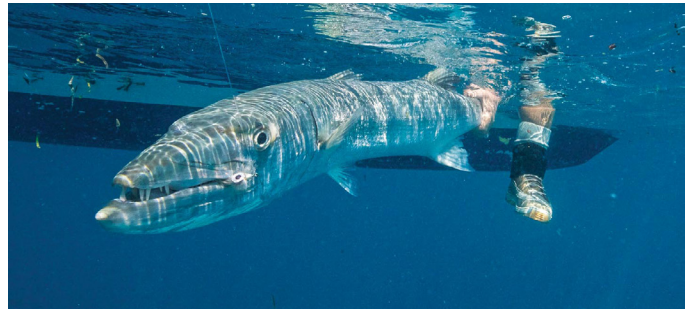
SEYCHELLES SPECIES

BLUE WATER FLY FISHING & GAME FISHING



BLUEFIN TREVALLY *Caranxa melampygus*

Bluefin trevally are distributed throughout the tropical waters of the world with populations varying according to fishing pressure. Areas like Cosmoledo, that have shallow lagoons, support healthy populations of juveniles, which contribute immensely to the overall population. The typical size of fish would be from 18 cm to 80 cm, with an 80 cm specimen being a trophy.



BARRACUDA *Sphyraena barracuda*

These fearsome looking creatures are extremely fast and jump when hooked. Larger barracuda, which grow to over 240 cm, are more or less solitary in their habits and hunt alone when on the flats. Although all of our destinations have great numbers of barracuda, the largest specimens are caught at Cosmoledo due to the incredible population of bonefish that they feed on.



INDO-PACIFIC SAILFISH *Istiophorus platypterus*

The sailfish is the fastest fish in the sea and named after its large dorsal fin, which extends most of the length of its body. These acrobatic fighters are found in the deeper water that surrounds Cosmoledo in good numbers.



WAHOO *Acanthocybium solandri*

The Seychelles waters are known for their incredible numbers of wahoo due to the rich currents that flow close to the atolls. Reaching speeds of up to 80 kilometres per hour, the wahoo is the third fastest fish in the sea. The wahoo that frequent the Cosmoledo waters range between 10 to 50 lbs.



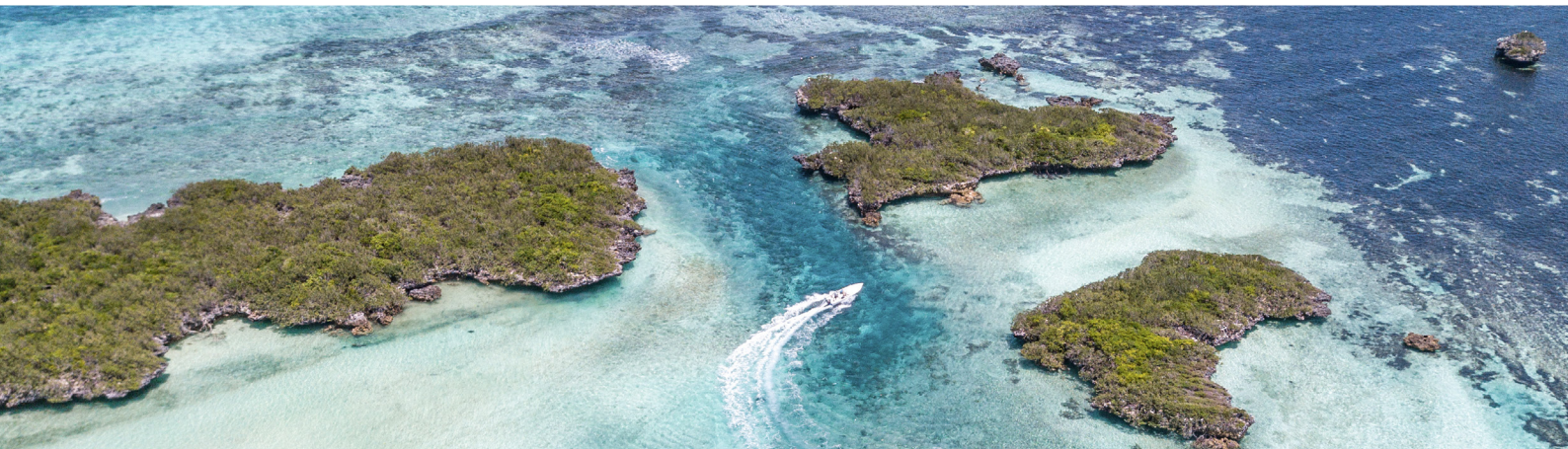
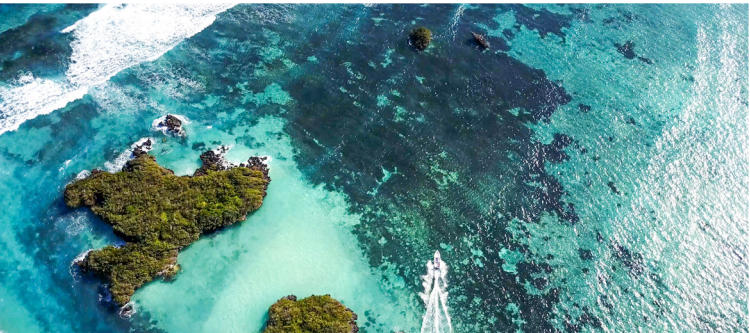
DOGTTOOTH TUNA *Gymnosarda unicolor*

Dogtooth tuna are a resident-pelagic fish that are found along the drop-offs in good numbers at Cosmoledo. They patrol continental shelf drop-offs and frequent depths between 50 and 150 ft, which are found relatively close to shore around the atoll. These fish can be targeted by dredging with a heavy sink tip fly line and a Mega Clouser.



YELLOWFIN TUNA *Thunnus albacares*

Cosmoledo is surrounded, at close proximity, by sheer drop-offs and ledges. Yellowfin tuna tend to follow the bait as they migrate through the Seychelles waters therefore Cosmoledo usually has good numbers of yellowfin tuna year round.





COSMOLEDO EXPERIENCES

Over and Above our World Class Fishing...



Cosmoledo Atoll needs to be experienced to be believed... The geographical isolation of Cosmoledo Atoll creates an atmosphere of undisturbed solitude where guests forget about the outside world and immerse themselves in all the natural wonders and unique experiences that the island has to offer.

**** COMPLIMENTARY ACTIVITIES ON COSMOLEDO ISLAND. ALL ACTIVITIES ARE WEATHER AND TIDE PERMITTING.**

WIZARD ISLAND TOUR**

A guided tour across Wizard stopping at major landscapes and seascapes for guests to familiarize themselves with the coastal trails and most secret spots on the island. During the tour guests will be informed about the early visitors of Cosmoledo and the collection of guano and birds eggs. Learn about birdlife, fish and plants as you see every corner of the island with our knowledgeable guides.

ATOLL EXPLORATION EXCURSION

Join our guides on an adventure like no other, learning, exploring and discovering all that the 17 uninhabited islands of Cosmoledo have to offer. This is a full or half day excursion and you are able to decide how far and wide you would like to explore this magical atoll. Be prepared to have encounters with a variety of shark species, turtles as well as many types of birds including waders and roosters.

BLUEWATER FISHING

Experience offshore fishing like never before... The unspoilt waters of the Cosmoledo Atoll are home to a vast variety of bluewater species. The structure and sheer drop-offs are idyllic for species such as sailfish, wahoo, dogtooth tuna, yellow fin tuna and dorado. On each given day there is an opportunity to fight the reel and target these species for either a full or half day.

OCEAN SAFARI

Cosmoledo is a year-round home to a few pods of spinner dolphins. Share the thrill of meeting one of these dolphins in the wild and experience the unique bond and kinship they inspire in mankind. Although they are quite shy, if spotted these dolphins are energetic and boisterous. During this trip you may spot manta rays, tuna and many other marine species.





INDEPENDENT ACTIVITIES**

The running paths around the island pass through natural coastline vegetation and lead to the various private and secluded beaches on Wizard Island. Guests are provided with information for the directions and distances of these routes.

Kayaks and stand-up paddle boards are available for guests wanting to explore the island independently. Snorkelling is a great way to see what marine life resides beneath!

ISLAND SPECIALITIES

Each week guests are offered a few luxuries Cosmoledo is renowned for:

SUNDOWNERS ON THE BEACH**

A cocktail or a ice cold beer can be enjoyed while watching the picturesque sun set above the waters.

FLATS LUNCH**

A special treat offered by Cosmoledo is the amazing Flats Lunch. A dining atmosphere like no other. Guests get to revel in the sheer beauty of the flats whilst feasting on a delicious buffet accompanied by an ice cold beverage.

DE-TACKLING & SNACKS**

Every Wednesday guests join the AFC guides and team at the entertainment area for a social de-tackling gathering. While the guides de-tackle, guests enjoy snacks with fellow nature, fishing and diver partners celebrating the week's achievements. Remember, every fish and new sighting counts!

KAYAK**

Kayaks are a perfect and non-intrusive way to get up close to turtles and rays around the flats and allow guests to enjoy Cosmoledo from a new perspective. A guided tour by nature experts who will point out seabirds and spot fishermen's delights such as bonefish, permit and triggerfish.

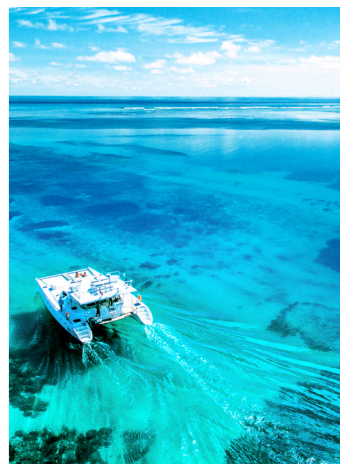
For something more private and personal kayaks are readily available for guests use. This way guests get to appreciate the untouched exquisiteness of Cosmoledo solely at their own pace. A picnic basket in the form of a Yeti Cooler can be organised for guests to carry along, enabling them to choose a spot for a secluded meal or snack.

REEF FLATS EXPEDITION**

Travel the inside reef flats of Cosmoledo with a knowledgeable and insightful guide. On this expedition guests get to appreciate the untouched view of the white sand and crystal clear waters whilst spotting juvenile turtles, eagle rays, eels and see all types of nature come together. Partake in an optional volunteer biodiversity survey and gather baseline data about all the species found deep in the sea grass meadows, under rocks and squeezed into crevices in the reef platform.

SCUBA DIVING

Come face to face with daily encounters of stingrays, turtles, moray eels, barracuda, sharks, tuna, grouper, snapper, trevally and many more around the waters of Cosmoledo which are suitable for any class of diver, from beginner to advanced.







THE FINER DETAILS

Things to Take Note of...

INCLUSIONS & EXCLUSIONS

RATES INCLUDE

- 7 Night package with all meals included
- Private charter flight
- Six days fully guided fishing
- Max Pax: 12 anglers | 6 Adventurers Per week (2 anglers per 1 guide & skiff)
- Tender boat and fuel
- Rod & reel rental
- Soft drinks during activities, water, tea and coffee
- Wine with dinner
- Laundry

RATES EXCLUDE

- International Flights
- Accommodation and transfers in Mahé
- Beverages
- Telephone and internet charges
- Travel and medical insurance
- Tackle and flies
- Gratuities
- Conservation donation of US\$210

GENERAL INFORMATION

WEATHER

Seychelles is typically hot and somewhat humid with midday temperatures hovering at $\pm 35^{\circ}$ Celsius [$\pm 90^{\circ}$ Fahrenheit]. The evenings are also invariably warm with the exception of the first and last few weeks of the season, when there may be a strong, cooling breeze.

THE FISHING SEASON AT COSMOLEDO

The first part of the season traditionally runs from early November to late April, with a break over the festive season. Due to Cosmoledo being a further 2° south of Alphonse Island, the south-easterly monsoon winds blow insistently from May to October. We stick to the fore mentioned dates to ensure you have an unforgettable fishing experience

HOURS OF DAYLIGHT

Due to its proximity to the equator, there is no real twilight in the Seychelles. The sun rises quickly at around 06h15, and sets with equal swiftness at about 18h30. This varies by only minutes throughout the year, giving nearly a full 12 hours of daylight for 365 days a year.

CONSERVATION DONATION

There is a conservation donation of US\$210 per week [US\$30 per day]. This will be included on your confirmation invoice and is settled prior to arrival. All packages exclude this conservation donation which is given to the Island Conservation Society for the preservation of nature in the Seychelles.

FROM SCENE OF ACCIDENT MEDIVAC INSURANCE

You are required to obtain "From Scene of Accident Medivac Insurance". Please supply these details prior to arrival on the Island. Alphonse Island Lodge Limited and agents cannot assume any financial responsibility for consequences incurred if this has not been obtained.

TRAVEL INSURANCE

You are required to obtain travel insurance that will cover any costs incurred due to flight or trip delays for any reason.

INDEMNITY FORM

You are required to sign an indemnity form before boarding the transfer vessel.

ENTRY INTO SEYCHELLES

Every visitor who intends to travel by air or sea to the Seychelles must have an approved, valid Travel Authorization or Disembarkation Information Form. Applications can only be made up to five days prior to your arrival date in Seychelles. There are different requirements for travel to the Seychelles for citizens, permit holders and visitors. Please pay attention to the required documents that apply to you or your group. A yellow fever vaccination is needed if you are traveling to Seychelles from a yellow fever endemic region. If you are transiting through an airport of a yellow fever endemic region for less than 12 hours you do not need yellow fever vaccination. You will need this certificate to apply for your Travel Authorisation. For more information and to apply, refer to the Seychelles Immigration website: seychelles.govtas.com.

FLIGHT TIMES

NB: Please check flight times as they vary. The flights leave Mahé from the IDC hangar and arrive on Astove three hours later. It then departs Astove 45 minutes after arriving and will land back at the IDC Hangar three hours after departing Astove.

LUGGAGE RESTRICTIONS

Your check in luggage is strictly limited to 15 kg [33 pounds] per person, and 5 kg [12 pounds] carry-on luggage. This is a strict policy that allows us to deliver fresh food produce to the boat. If it is not possible to load extra luggage, it will have to be repacked and left in Mahé until your return.

Please adhere to the limits. It is suggested that lighter soft-shell luggage is used. Pack a separate bag with excess equipment to avoid having to repack at the airport. Excess luggage can be left with an Alphonse representative at the hangar.

FISHING CLOTHING

Lightweight long sleeve shirts and long pants that can be zipped off are recommended. Sunscreen with a minimum protection factor of at least 30 is required for any exposed skin areas. A buff is of great importance for sun protection of your face. Sun gloves will help protect your hands. A packing list will be supplied in your Pre-Trip Information.

COMMUNICATION

The phone service is operated via satellite and there is no Wi-Fi.

Communication cost: Incoming/outgoing emails US\$41 per MB, Outgoing voice call US\$4 per minute, incoming voice call US\$3 per minute.

We advise that you leave the contact details of Alphonse Island with your family and friends. The camp satellite phone is only switched on at certain times for logistical updates so a message can be passed onto you at this time.

Alphonse Island Number:
+248-4-22-9700 [GMT+04:00].

ELECTRICITY SUPPLY

The camp has 24-hour electrical current [240 volt, 50 cycles AC] with British plug points. A European electrical current adapter [three-point, square-pin] is necessary.

WATER CONSUMPTION

There is a desalination plant at the camp and the water from the faucets is safe to drink. We do not stock mineral water and will only supply it if you specifically requested prior to your arrival.

BEVERAGES

Should you have any special beverage requirements please let us know so we can ensure it is on location for your arrival. There will be Seybrew beer and a selection of spirits and wine on location. It's important to remember that when you are on Astove, it is a "dry island" so we request that you do not give any alcohol to the local staff.

GRATUITY GUIDELINE

If you wish to show appreciation to the general staff, we suggest a US\$300 per guest per week or US\$40 per day guideline. This is to be left with the camp manager upon departure for equal distribution.

For the Fly Fishing Guides a US\$700 per angler per week, which is given to the head guide at the end of the week.

Diving Team: \pm USD25 per dive for the diving team, divided up by the dive team and skippers.

Activity Team: \pm USD15 per day for the activity team if you have joined any activities.

All tips are to please be paid in cash.

CURRENCY

You do not need to change your US\$ [US Dollars], € [Euros] or £ [Pounds] into the local currency SCR [Seychelles Rupees]. The lodge accepts Rupees, Dollars, Euros and Pounds. Please bring sufficient cash to settle tackle bills, tips and other costs incurred. It's important to remember that there will be no credit card facilities on location so it's best to carry cash for on location tackle and beverage purchases as well as gratuities. All credit card purchases will be done manually.



WADING

The hard white sand, turtlegrass or coral flats of the Seychelles make for easy wading, separating it from other destinations in the world. As most of the fishing will be done whilst wading, good protective footwear is essential. Standard diver's neoprene booties with a reinforced rubber sole are not appropriate. A more protective flats wading boots must be worn. There are a number of purpose made boots on the market, which are excellent. See suggested brands in tackle and gear check list at the end of this document.

DANGERS TO WATCH OUT FOR WHILST WADING

Stingrays: Some atolls host large numbers of stingrays on the flats. Most species have a venomous, barbed spine near the base of their tails that they can use for defence. These spines can inflict a nasty wound, should an unwary wader inadvertently stand on a stingray. These often sedentary or slow moving fish are easy to see and avoid, and to date no anglers have had any problems with these docile creatures.

Stonefish: Found mainly in the shallows on the coral edges of reef flats, stone-fish are not only lethally toxic but are also very well camouflaged and will not move unless touched. A stonefish has 13 strong hollow spines through which it injects its venom and these will pass through a thin rubber sole with ease. For this reason all wading should be done wearing thick-soled wading boots.

Cone Shells: Fish-eating cones live in crevices among the coral or half covered by sand awaiting their prey which they attack by shooting out a dart that injects a paralysing venom. The venom from certain species can be fatal, how-ever proper footwear will ensure your safety.

Sharks: Frequently encountered whilst wading in Seychelles, sharks are inquisitive and may pause for an instant and give you the once over, but if you remain calm and quietly stand your ground, these magnificent creatures will not bother you.



PAYMENT & BOOKING INFORMATION

CREDIT CARD EXCHANGE

The following credit cards are accepted:

- MasterCard • Visa

American Express is not accepted. There is no credit card machine on Cosmoledo but we do allow for you to settle your tab through a manual credit card transaction.

CURRENCIES ACCEPTED

- Seychelles Rupee • USD • Euro • GBP

CANCELLATIONS

- A 10% fee shall be levied if cancellation is made more than 180 days prior to arrival OR if the reservation is moved to an alternative date within the same year.
- A 50% fee shall be levied if cancellation is between 180 and 90 days prior to arrival.
- A 100% fee shall be levied if cancellation is 90 days or less prior to arrival.
- Private island bookings require a 50% non-refundable deposit with final payment 90 days prior to travel.
- All cancellations and provisional bookings must be confirmed in writing.
- Bank fees associated with refunds are for the clients' account.

PAYMENTS

Reservations will be held for 2 weeks. 50% deposit required to confirm the booking, final payment is to be made 3 month prior to arrival. All extras will be settled on departure.

TARIFFS ARE QUOTED

- Inclusive of VAT in US Dollars
- Subject to availability

TARIFF CHANGES

All tariffs are subject to change, without prior notice, however rates quoted for confirmed bookings will be honoured.

VAT [a Government tax]

A Government Tax [VAT] of 15% is applicable on all items payable.

BANKING DETAILS

Beneficiary	Alphonse Island Lodge LTD
Bank Name	Mauritius Commercial Bank [SEY] LTD
Bank Address	Victoria Branch P O Box 122, Mahé, Seychelles
Account No	00000 254557
SWIFT CODE	MCBLSCSC
IBAN	SC53 MCBL 0607 0000 0000 0025 4557 USD



ALPHONSE
FISHING COMPANY
SEYCHELLES

CONTACT DETAILS

ISLAND

Telephone	+248 422 97 00 +248 422 90 30
E-mail	info@alphonsefishingco.com

RESERVATIONS

E-mail	reservations@alphonsefishingco.com
--------	------------------------------------

MARKETING

E-mail	marketing@alphonse-island.com
Postal	Providence Industrial Estate
Address	Zone 18 - Parcel S9566 No. 6023, Providence, Mahé, Seychelles
Website	www.alphonsefishingco.com

